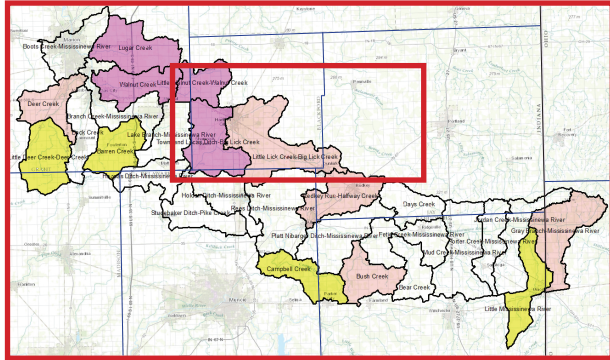


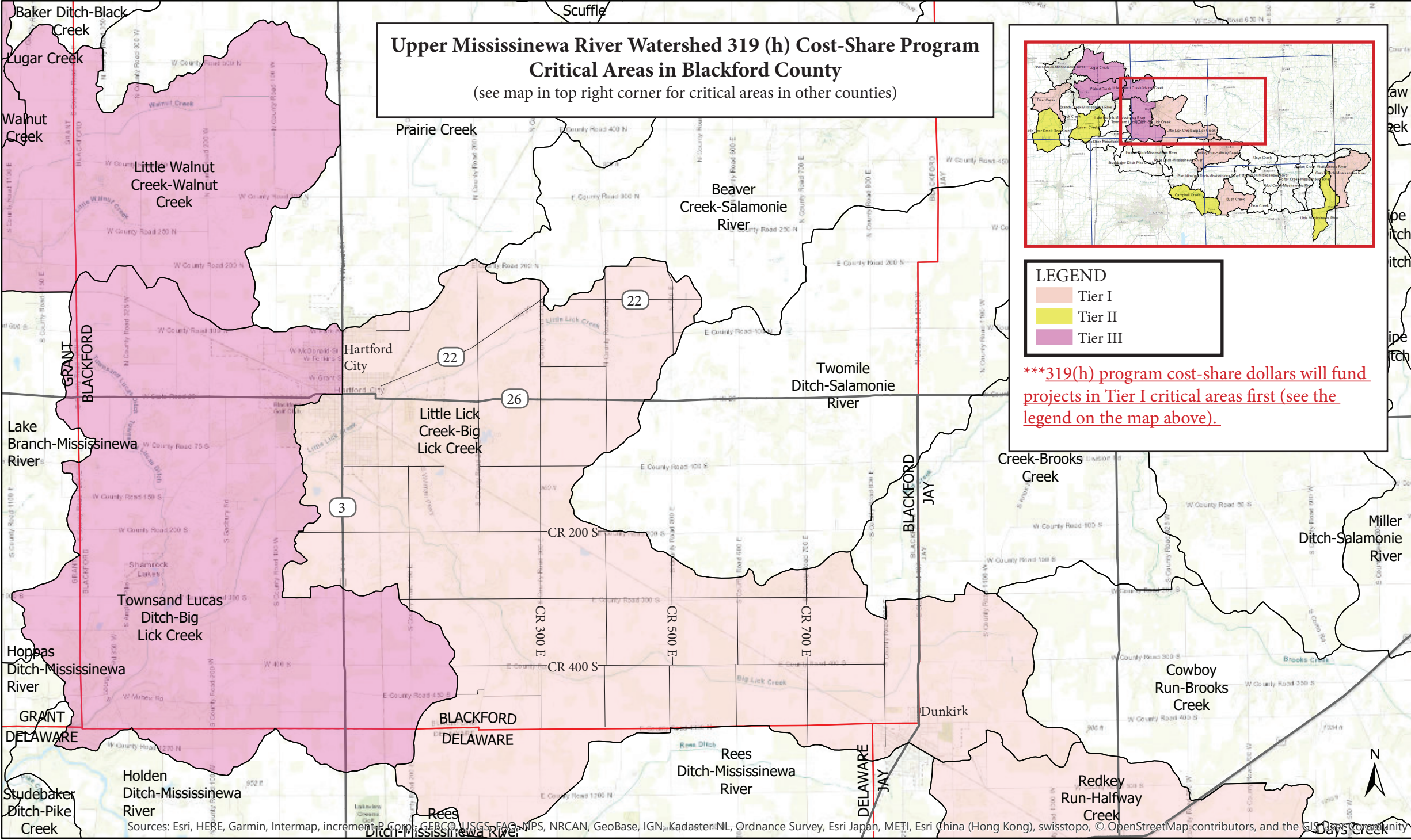
**Upper Mississinewa River Watershed 319 (h) Cost-Share Program
Critical Areas in Blackford County**
(see map in top right corner for critical areas in other counties)



LEGEND

	Tier I
	Tier II
	Tier III

*****319(h) program cost-share dollars will fund projects in Tier I critical areas first (see the legend on the map above).**



Sources: Esri, HERE, Garmin, Intermap, increment P Corp., GEBCO, USGS, FAO, MNP, NRCAN, GeoBase, IGN, Kadaster NL, Ordnance Survey, Esri Japan, METI, Esri China (Hong Kong), swisstopo, © OpenStreetMap contributors, and the GIS User Community

