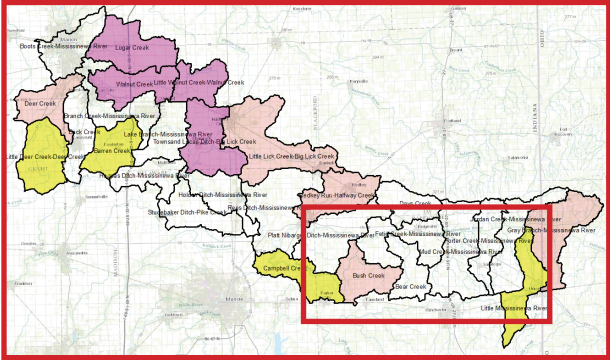
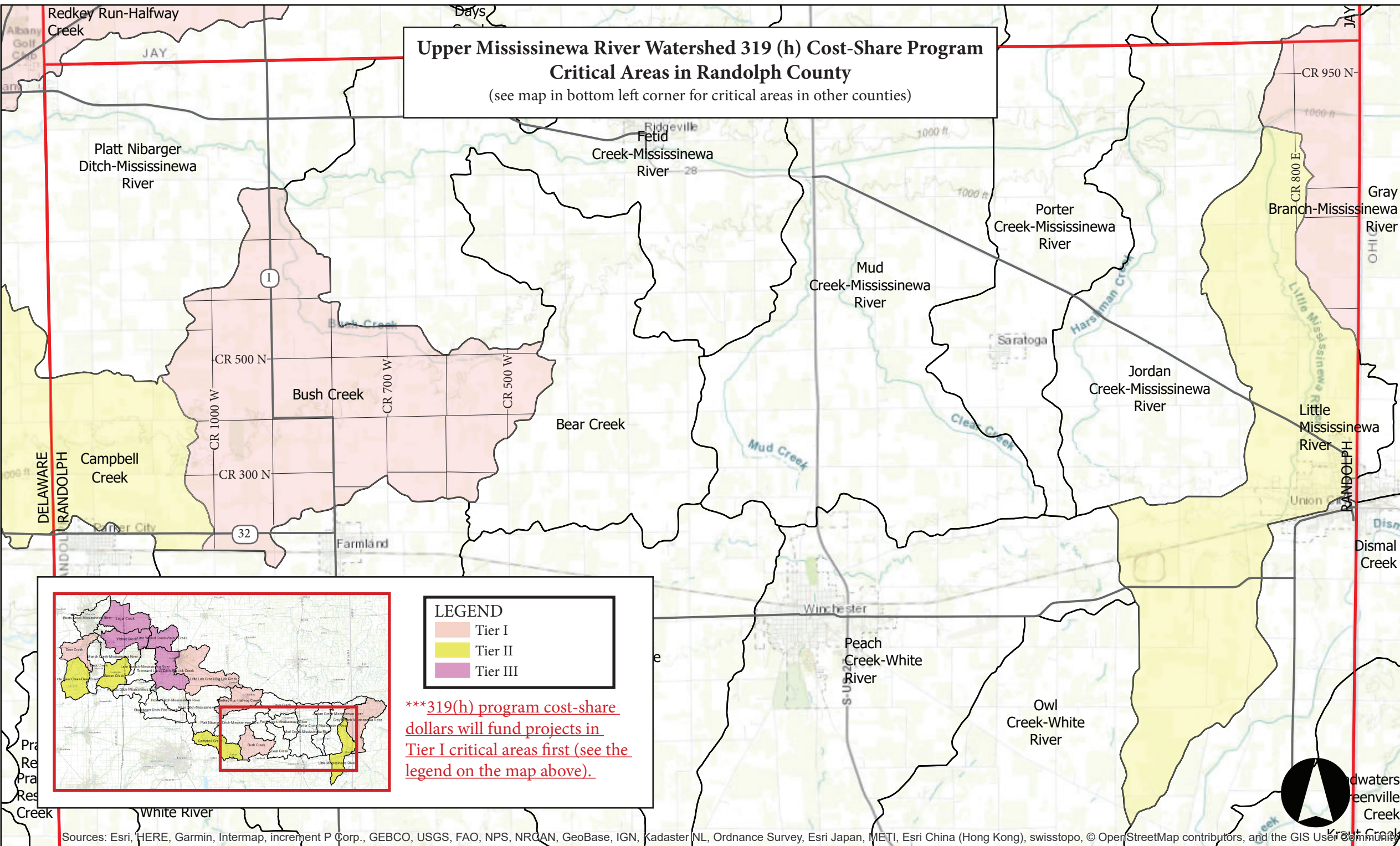


# Upper Mississinewa River Watershed 319 (h) Cost-Share Program Critical Areas in Randolph County

(see map in bottom left corner for critical areas in other counties)



LEGEND	
<span style="display: inline-block; width: 15px; height: 10px; background-color: #f8d7da; border: 1px solid black;"></span>	Tier I
<span style="display: inline-block; width: 15px; height: 10px; background-color: #fff3cd; border: 1px solid black;"></span>	Tier II
<span style="display: inline-block; width: 15px; height: 10px; background-color: #f8d7da; border: 1px solid black;"></span>	Tier III

**\*\*\*319(h) program cost-share dollars will fund projects in Tier I critical areas first (see the legend on the map above).**

